



Teams,

The Load In Doc is PROVISIONAL and subject to change. I send them out to give all teams enough time to sort out planning and get an idea on timing. I do my best to keep changes to a minimum and update the website up to 3 days out.

**REMINDER** – this year ALL Pickup Trucks pulling trailers (bumper or 5<sup>th</sup> wheel) **WILL BE DISCONNECTING AND MOVING VEHICLES TO P1 IMMEDIATELY WHEN PARKED.** PLEASE BE PREPARED TO DISCONNECT QUICKLY UPON BEING PARKED. Rows 3 & 4 will be stacked parking, not nose to tail. Given the number of entries there will be teams parked on the hill on the 2 pads.

Load in will start with Row 1, 9 a.m. Thursday May 1st

# LOAD IN ORDER

<u>Row 1</u>	<u>ON SKID PAD</u>	<u>DOWN EXIT RAMP 3</u>
1	SUPER CARL	
2	TOP PRO	
3	ORANGE CAT	
4	JONES HONDA	
5	SADDLEMEN	
6	VANCE & HINES	
7	INDIAN	
8	STRACK	
9	SHIEBE	
10	BPR	
11	ATTACK YAMAHA	
12	HSBK	
13	HSBK	
14		
15		

<u>Row 3</u>	<u>STAGING ON SKID PAD</u>	<u>DOWN EXIT RAMP 3</u>
1	ARCH	
2	RED LOBO	
3	COMPETITION WERKES	
4	VESTMENT	
5	LAROCHE TREE SERVICE	
6	EDGE	
7		
8	PS SQUARED (ENTRY RAMP)	

<b>Row 2</b>	<b>STAGING ON SKID PAD</b>	<b>DOWN ENTRY RAMP 1</b>
1	TYTLERS	
2	M4	
3	M4 HOSPITALITY	
4	REAL STEEL	
5	RAHAL DUCATI	
6	ALTUS	
7	3D MOTORSPORTS	
8	HD	
9	KWR	
10	THRASHED	
11	FLO4LAW	
12	ADR	
13	MP13	

<b>Row 4</b>	<b>STAGING IN TOWER PADDOCK</b>	<b>DOWN ENTRY RAMP 1</b>
1	SDI	
2	GIACCAMOTO	
3	IKONIC YACHTS	
4	ORGANON GROUP	
5	TEAM JBJR	
6	LANE RACING	
7	MONK MOTO	
8	AUGUST RACING	
9	BLUE PHOENIX	
10	OTW RACING	
11	READY TO RIDE	
12	SLOPPY SPROKETS	
13	NASHVILLE RACING	
14	WHEY RACING	
15	CARRSVILLE RACING	
16	TAB PERFORMANCE	
17	TEAM VELOCITY	
18	MAD MONKEY	
19	TSE	
20	SEND ZEN	

21	HUNTER DUNHAM	
22	EL CAMBERRO RACING	
23	CW MOTO	
24	SHANE MAGGS	
25	DURBIN RACING	
26	ROBEM	
27	FBT MOTORPOSRTS	
28	IMPACT RACING	
29	DG RACING	
30	AJ PEASLEE RACING	
31	BLACK ICE RACING	
32	WALL 519	
33	GALLUSSER RACING	
34	JBJR	
35	KING PERFORMANCE	
36	UNDERGROUND TEAM RACING	
37	HART RACING	
38	LIMITLESS RACING	
39	MISFIT RACING	
40	TAYLOR KNAPP RACING	
41	ELLIOT RACING	
42	S1 RACING	
43	CORRENTES RACING	
44	YELTON RACING	
45	LTD RACING	
46	METRONOME RACING	
47	PRIVATEER MOTORSPORTS	

# PAD 1 PARKING

		BLUE ROAD
1	ONE LAP RACING	
2	VILLAGE BOY	
3	CRASH BANDICOOTS	
4	HTC RACING	
5	SUPER FOOLIGANS	
6	SIX ONE RACING	
7	210 SPEED LAB	
8	REMIX RACING	
9	CHIEFS RACING	

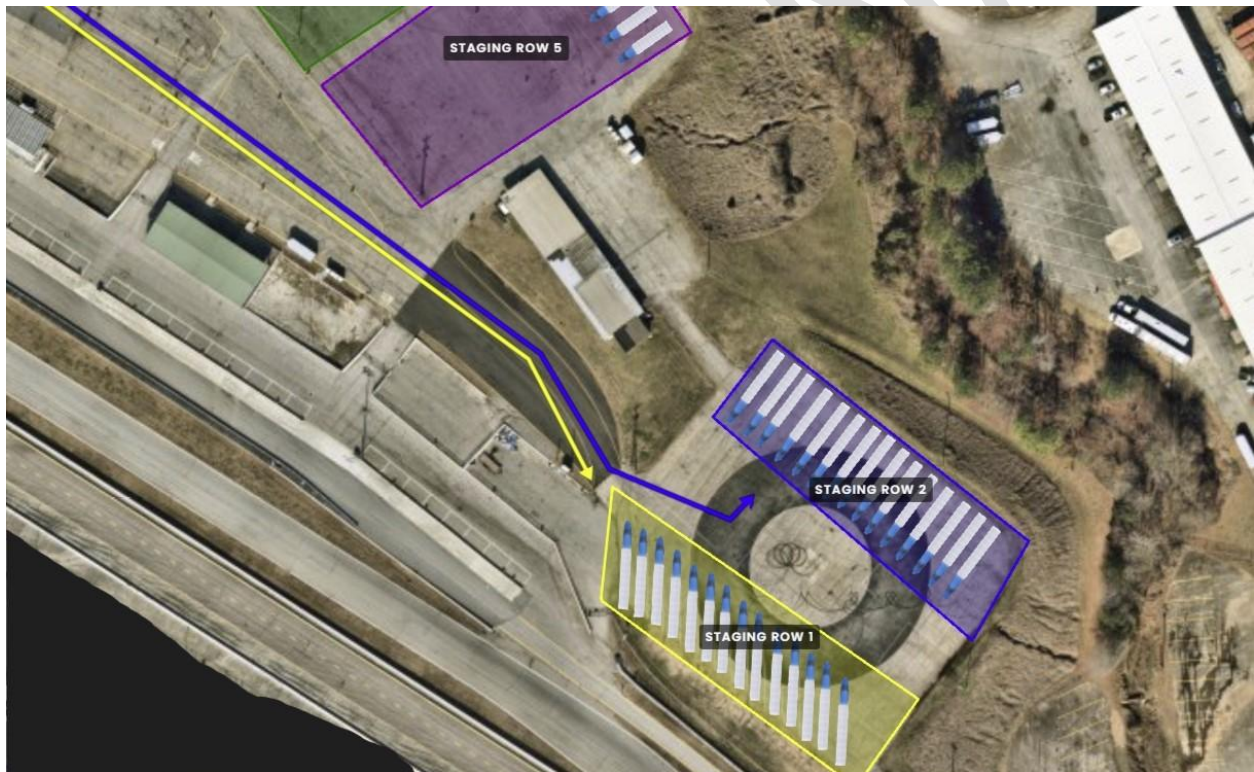
## PAD 2 PARKING

PAD 2	STAGING ON SKID PAD	BLUE ROAD
1	SEETHALER RACING	
2	UGOH RACING	
3	RED BOY	
4	POSSE RACING	
5	JUPITER POWER	
6	MAT PAT RACING	
7	SUPERBIKE SUPPLY	

# STAGING INSTRUCTIONS

You are allowed to come in and stage anytime on Wednesday.

Staging for **Row 1** & **Row 2** on SKID PAD  
(PARK AS PICTURED)



Staging for **Row 3** **Row 4** **Row 5** in Tower Paddock Area



Staging for PADS 1 & 2 in **ORANGE** Staging Lot in front.  
(PARK AS PICTURED)



# LOAD IN INSTRUCTIONS

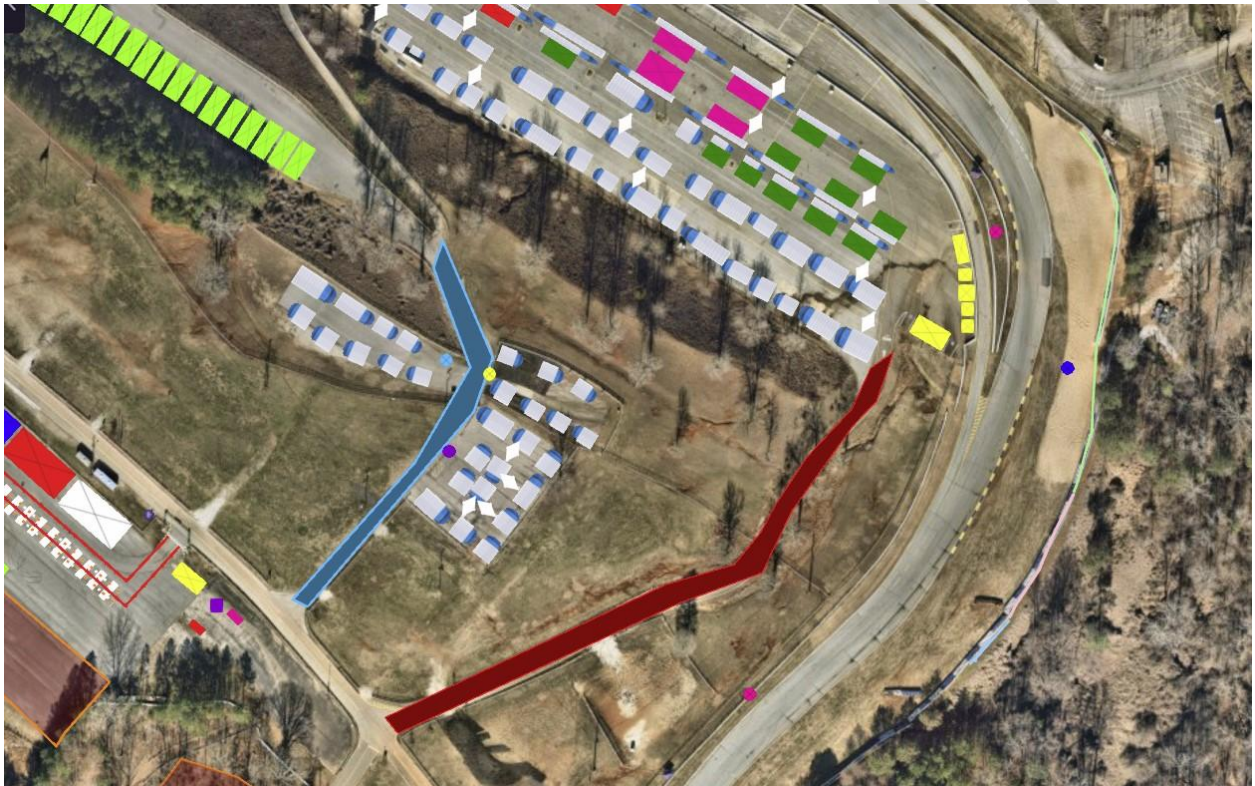
Load in will start at 9am

ROW 1 will be called first. You will cross over the bridge and turn left on Yellow Ramp 3, **followed by ROW 3** you will come down the same **YELLOW RAMP 3**.



**After that we will call ROW 2. You will cross over the bridge and turn left on Red Ramp 1.**

**Next up, we will call Row 4 followed by Row 5 to come down Red Ramp 1.**



## Pad Parking on Top

\*TEAMS IN PICTURE ARE NOT TEAMS ASSIGNED



## **RV ASSIGNMENTS SHELF PARKING ON PADDOCK SIDE**

Space #	Name
1	N.LEWIS
2	H.GILIM
3	M.MERICLE
4	KYLE WYMAN
5	T. WYMAN
6	K.WYMAN
7	J. STRACK
8	T. HERFOSS
9	J. RISPOLI
10	C. ALEXANDER
11	R. VEST
12	P. DIENER
13	S. DOWLING
14	JD BEACH
15	B.GILSENAN
16	H. DUNHAM
17	E. COSME

**RV SPACES 17 is on a slope, leveling will be needed. If you Requested a Power Spot and are not on this list, you will need to purchase a non-powered space for \$100 and park in middle of Support Paddock.**

## ASSIGNED RV SPACES 1-17...

Self-Park any time THURSDAY STARTING AT 7AM, Turn left on **Blue** Ramp 2, proceed down to RV Shelf and Park in ASSIGNED Numbered Spot.



# **NON- POWERED RV PARKING**

**If you were not assigned a powered space due to limited availability, non-powered RV parking is in the Tower paddock towards the back. DO NOT PARK IN A SPACE THAT OFFERS POWER, PARK IN THE CENTER.**



**If you have any questions please email me.**

**Thank you,**

**Jason Wade**

**[jwade@motoamerica.com](mailto:jwade@motoamerica.com)**

